

# DATA Sheet

## GigaBIX PS6+ Patch Cords



AX101945 GigaBIX PS6+ Patch Cord, BIX-BIX, 4 ft



AX101951 GigaBIX PS6+ Patch Cord, BIX-8MOD, 4 ft

GigaBIX PS6+ Patch Cords increase the proven versatility of the expanded GigaBIX Multi family of connectivity products. GigaBIX PS6+ Patch Cords allow for high-density connections, coupled with flexibility for cost-effective installation and administration. Plug-and-go installation and rearrangement of patch cords do not require any special tools or training.

GigaBIX PS6+ Patch Cords are 4-pair 23 AWG UTP GigaBIX-compatible cords that are used in GigaBIX Cross-Connect System in Belden IBDN System 2400 and System 4800LX, providing channel bandwidths of 250 MHz and 300 MHz respectively. The GigaBIX PS6+ Patch Cord and GigaBIX Connector provide a mated performance that exceeds Category 6 requirements.

GigaBIX PS6+ Patch Cords are available in two different configurations and in various lengths. BIX-BIX patch cord configurations are terminated with GigaBIX-compatible plugs at each end for easy cross-connection between equipment and distribution fields. BIX-8MOD patch cord configurations are terminated with a GigaBIX-compatible plug at one end and an 8-position modular plug on the other. They are available in T568A-ISDN or T568B-ALT wiring schemes. These cords are used to easily interconnect equipment directly into the distribution field.

### Features & Benefits

- > Beyond Category 6 performance providing additional margin to support gigabit applications
- > GigaBIX-compatible plug for high density installation and to reduce installation space requirements
- > New and improved compact design to improve connector and plug accessibility

- > Robust and installer-friendly plug design with proven contact reliability to reduce network operating costs
- > Marked with pair identification (1 to 4) for easy orientation
- > Available in various sizes and lengths for greater installation flexibility

### Applications

- > Horizontal distribution or equipment terminations in telecommunications rooms and equipment rooms
- > Interconnection terminations in consolidation points
- > See specifications for each component

### Technical specifications

#### Qualifications

- > UL Listed as a Communications Circuit Accessory

#### Configurations

- > BIX-BIX termination with straight-through wiring
- > BIX-8MOD termination with BIX to 8-pin T568A-ISDN or T568B-ALT
- > Available in 1.2, 1.8, 2.4, 3.0, 4.6, and 7.6 m (4, 6, 8, 10, 15 and 25 ft) lengths

#### Cable

- > GigaFlex PS6+ Patch Cable
- > UL Listed CMR
- > Nominal diameter: 5.6 mm (0.220 in.)
- > Minimum bend radius: 6 mm (0.236 in.)
- > Black jacket

## GigaBIX PS6+ Patch Cords

### Mechanical Characteristics

#### GigaBIX Plug

- Dimensions (H x W x D): 11.4 x 25.1 x 38.5 mm (0.450 in. x 0.990 in x 1.515in)
- Housing: fire-retardant thermoplastic rated UL94V-0, clear
- Overmold: fire-retardant thermoplastic rated UL94V-0, black
- Blade: copper alloy with tin plating over nickel
- Gas-tight connection with BIX clips
- Durability: 500 insertions

#### Modular Plug

- 8-position modular plug, FCC Part 68, Subpart F compliant
- IEC 603-7
- UL Listed as a Recognized Component
- Housing: fire retardant thermoplastic UL94V-0, clear
- Durability: 1000 mating cycles
- Contact material: phosphor bronze with 50 micro-inches gold over nickel

### Electrical Characteristics

#### GigaBIX Plug

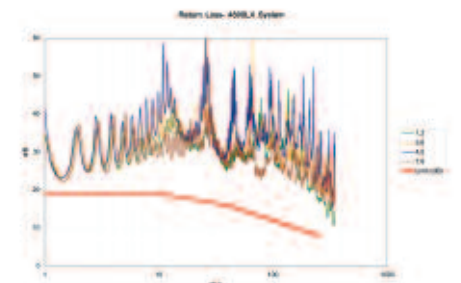
- Dielectric strength: 1,000 V RMS at 60 Hz for 1 minute
- Voltage rating: 150 VAC maximum
- Current rating: 1.5 A maximum
- Insulation resistance: 100 M $\Omega$  minimum between clips
- Contact resistance: 3 m $\Omega$  per contact

#### Modular Plug

- Multi Applications Multi Media Multi Configurations
- Dielectric strength: 1,000 V RMS at 60 Hz for 1 minute
- Voltage rating: 150 VAC maximum
- Current rating: 1.5 A maximum
- Insulation resistance: 100 M $\Omega$  minimum between clips
- Contact resistance: 10 m $\Omega$  maximum

### Transmission Characteristics

- Exceeds Category 6 standard requirements, extended to 650 MHz
- Performance of a worst-case 4-conductor channel (100 m) using GigaBIX Patch Cords



## GigaBIX PS6+ Patch Cords

### Installation tips

- > Plan cross-connect or interconnect layout prior to ordering and installation
- > Use BIX-BIX Patch Cords for cross-connect configurations, between equipment and distribution fields
- > Use BIX-8MOD Patch Cords for interconnect configurations, between the network equipment and the distribution field
- > Use appropriate patch cord management accessories

### Packaging

- > Individually packaged in clear plastic bags
- > Minimum ordering quantity: 10
- > Ordering increments: 10

### For More Information

For any other product information call: 1-800-BELDEN-1 or visit us at [www.Belden.com](http://www.Belden.com)

All information is subject to change without notice, since Belden reserves the right to change its products as progress in engineering and manufacturing methods or other circumstances may warrant.

## Ordering Information

### \*GigaBIX PS6+ Patch Cord, BIX-BIX

LENGTH	UPC		ORDERING NUMBER
1.2 m (4 ft)	628575117512	NEW	AX101945
1.8 m (6 ft)	628575117529	NEW	AX101946
2.4 m (8 ft)	628575117536	NEW	AX101947
3.0 m (10 ft)	628575117543	NEW	AX101948
4.6 m (15 ft)	628575117550	NEW	AX101949
7.6 m (25 ft)	628575117567	NEW	AX101950

### \*GigaBIX PS6+ Patch Cord, BIX-8MOD T568A-ISDN

LENGTH	UPC		ORDERING NUMBER
1.2 m (4 ft)	628575117574	NEW	AX101951
1.8 m (6 ft)	628575117581	NEW	AX101952
2.4 m (8 ft)	628575117598	NEW	AX101953
3.0 m (10 ft)	628575117604	NEW	AX101954
4.6 m (15 ft)	628575117611	NEW	AX101955
7.6 m (25 ft)	628575117628	NEW	AX101956

### \*GigaBIX PS6+ Patch Cord, BIX-8MOD T568B-ALT

LENGTH	UPC		ORDERING NUMBER
1.2 m (4 ft)	628575117635	NEW	AX101957
1.8 m (6 ft)	628575117642	NEW	AX101958
2.4 m (8 ft)	628575117659	NEW	AX101959
3.0 m (10 ft)	628575117666	NEW	AX101960
4.6 m (15 ft)	628575117673	NEW	AX101961
7.6 m (25 ft)	628575117680	NEW	AX101962

\*Other colors may be ordered, contact Customer Service.